

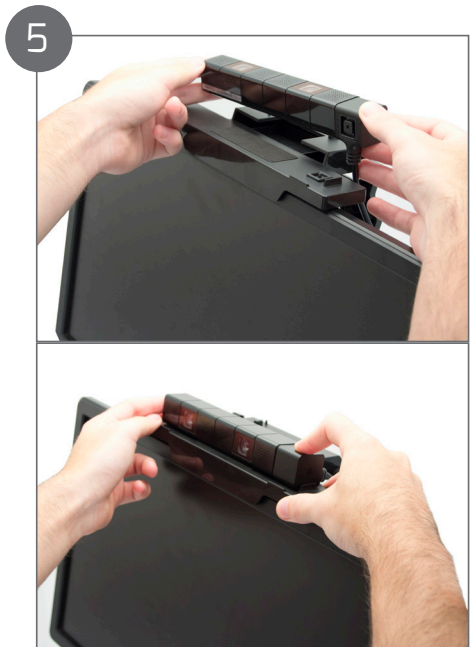
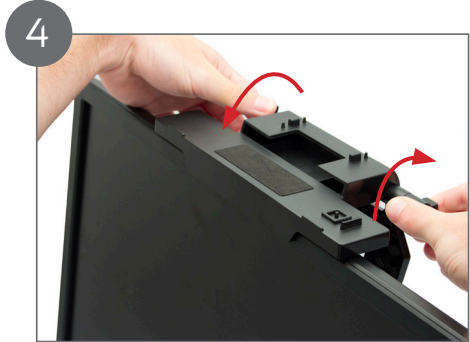
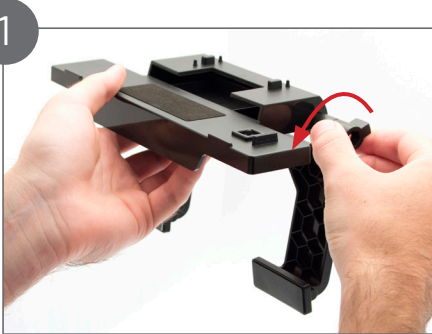
Gaming TV Mount Instructions

For use with Xbox Kinect® & PS4™ Camera

Model number: VS2852




PS4 Camera Instructions

1. Twist butterfly screws to undo and allow adjustment
2. Position mount onto TV
3. Adjust mount to press securely against the TV
4. Tighten butterfly screws
5. Click the Camera into place



VENOM
Take Control

Venom Ltd. Solution House, Sandon Road, Therfield, Hertfordshire SG8 9RE.
Venom is a trademark of Venom Ltd.
www.venomuk.com

 Venom UK Gaming
 @VenomGamingUK
 Venom UK Gaming



Gaming TV Mount Instructions

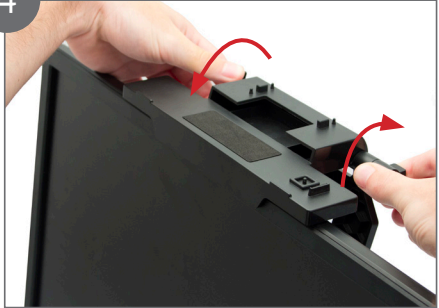
For use with Xbox Kinect® & PS4™ Camera

Model number: VS2852

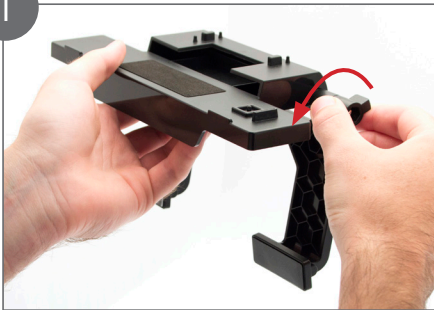
Xbox Kinect Instructions

1. Twist butterfly screws to undo and allow adjustment
2. Position mount onto TV
3. Adjust mount to press securely against the TV
4. Tighten butterfly screws
5. Slide the Kinect into place

4



1



5



2



3



Xbox One®, Xbox Live® and Xbox® logo are either registered trademarks or trademarks of Microsoft Corporation in the US and/or other countries.
The names of actual products and companies mentioned herein may be the trademarks of their respective owners. This product is not sponsored, endorsed, licensed or approved by Sony.
This product is manufactured and distributed by Venom Limited.

